



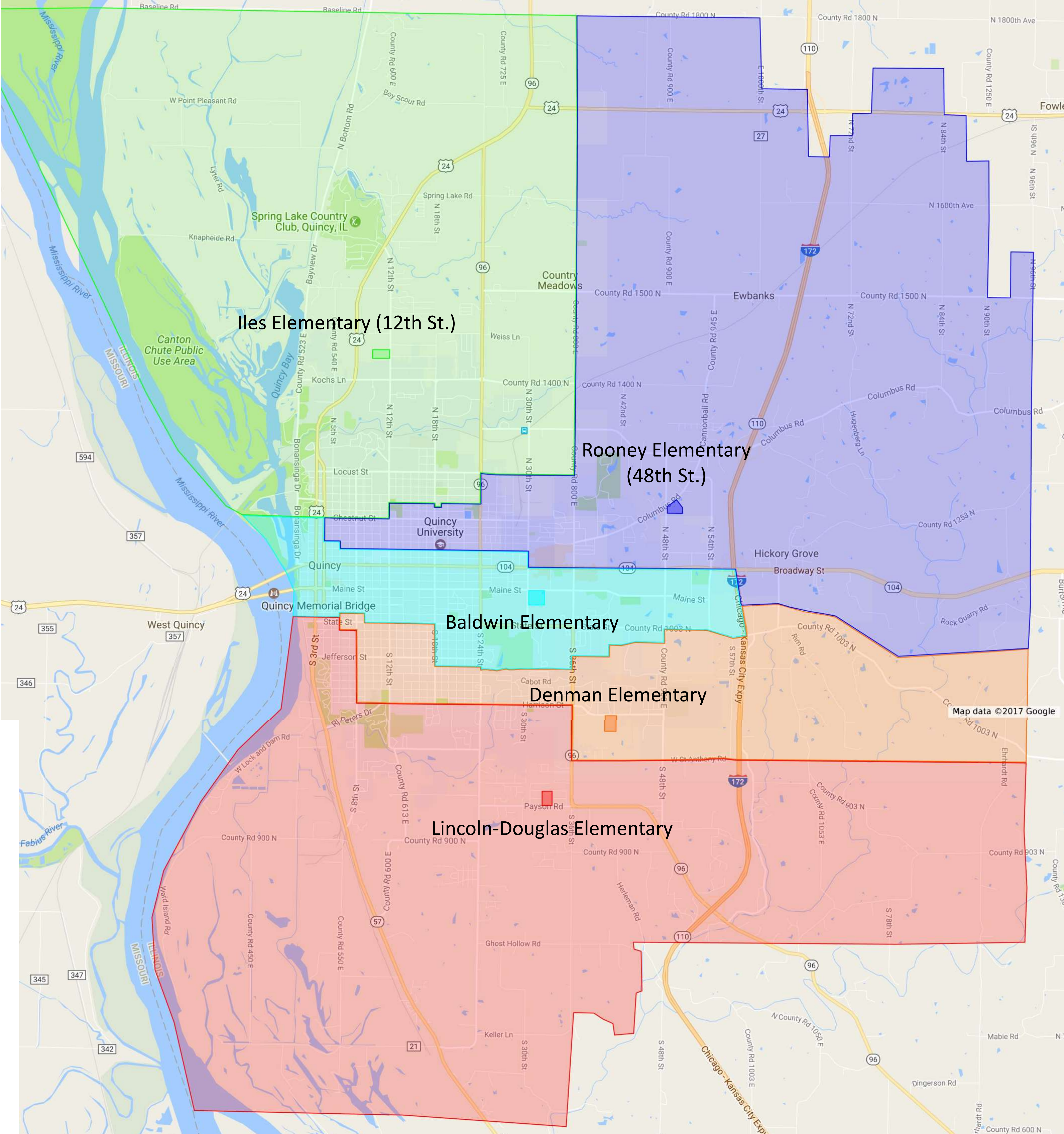
Task Force Goal
**Improved Educational Outcomes
and Opportunities for All Students**

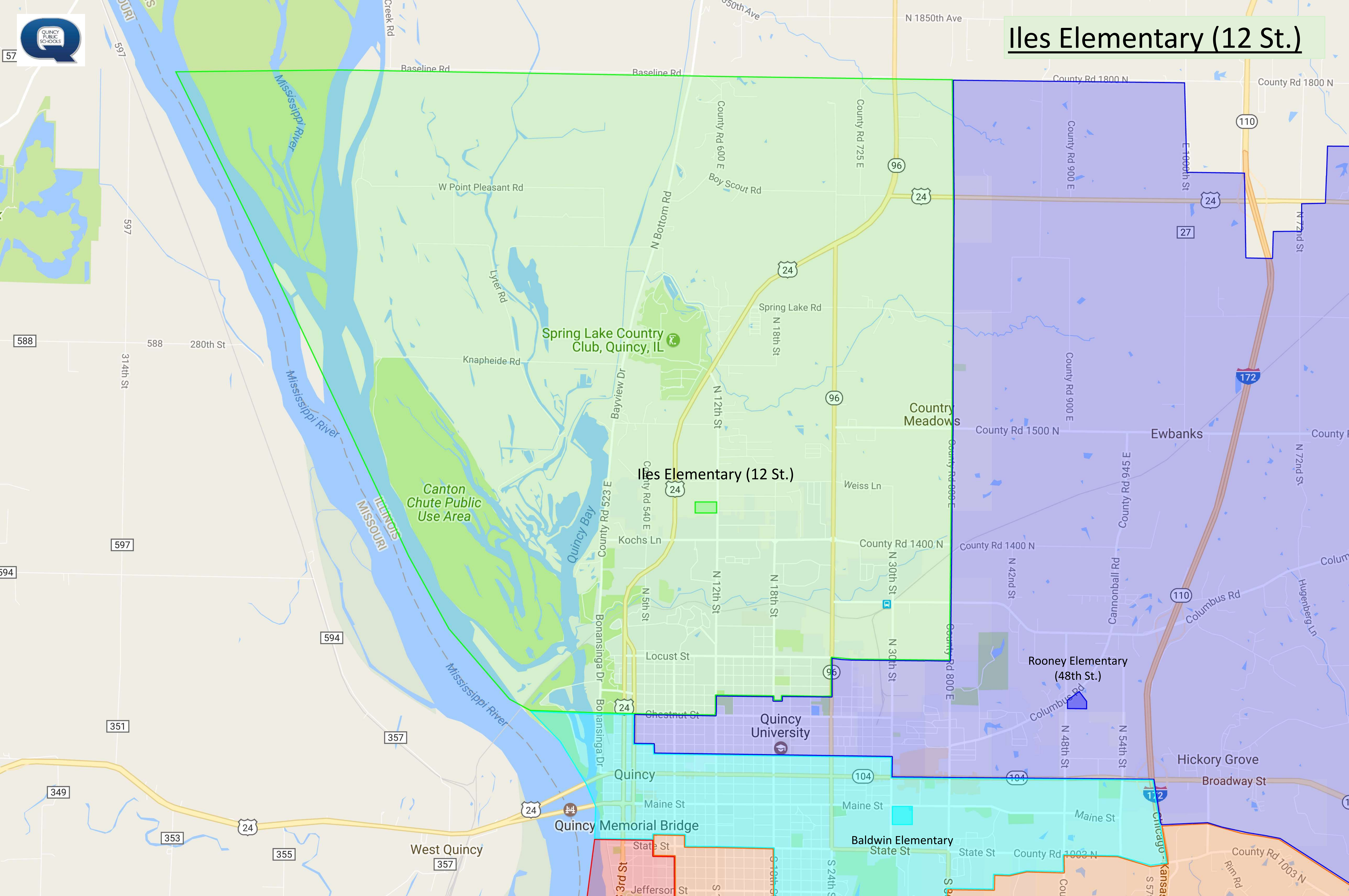
Guiding Principles

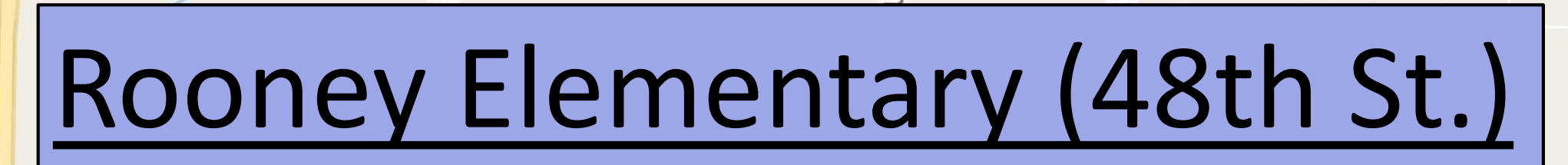
- Achieve a more balanced socioeconomic demographic among the five new elementary schools while evenly dispersing students by numbers to maintain balanced classroom sizes and school populations.
- Attendance boundaries should recognize district-wide needs. The attendance boundaries should reflect what is in the best interest of all students in the district.
- Attendance boundaries should recognize the importance of maintaining boundaries as long as possible, but recognize the reality that enrollment changes may require future changes in boundaries.

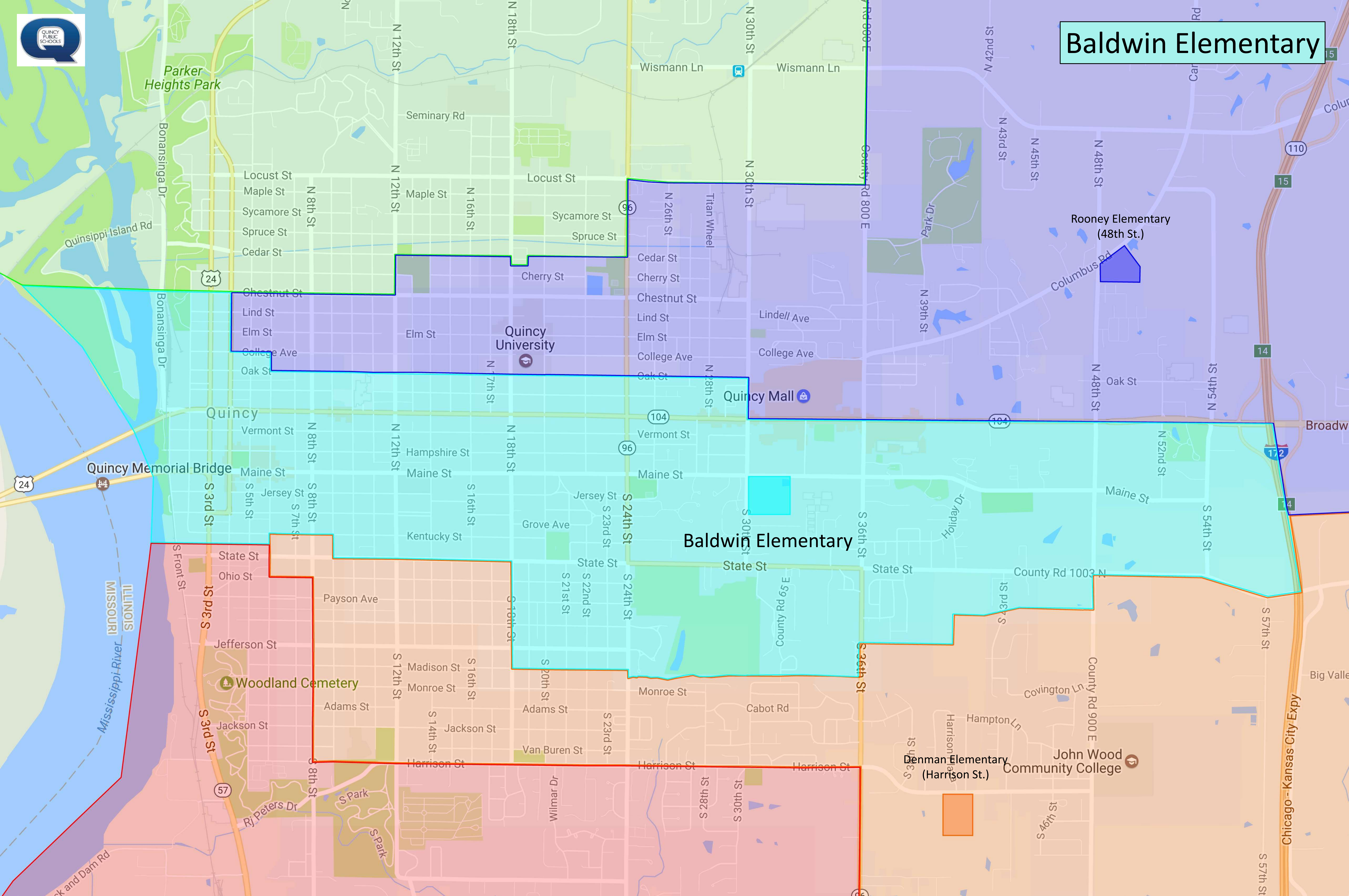
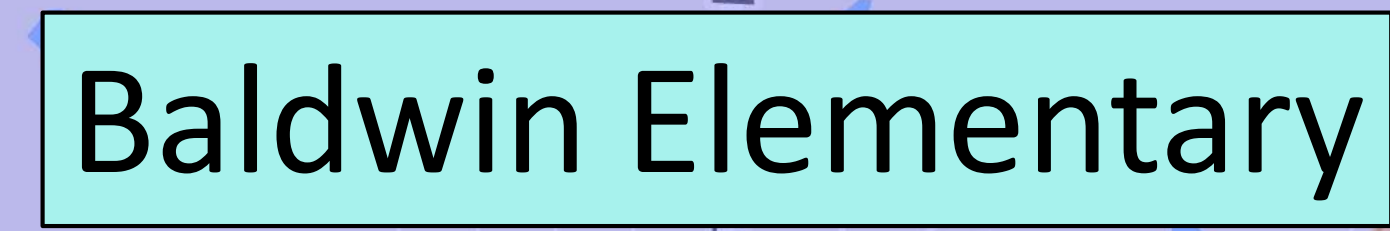
	Enrollment	% of Free & Reduced	% of Minority	% of IEP
Iles Elementary (12th St.)	576	64.4%	21.9%	17.0%
Rooney Elementary (48th St.)	581	65.4%	24.1%	17.4%
Baldwin Elementary	582	66.8%	23.2%	14.3%
Denman Elementary (Harrison St.)	586	59.4%	19.5%	14.0%
Lincoln-Douglas Elementary	578	61.1%	18.2%	15.7%

	K	1	2	3	4	5
Iles Elementary (12th St.)	95	93	101	77	108	102
Rooney Elementary (48th St.)	81	103	105	93	107	92
Baldwin Elementary	105	96	99	97	92	93
Denman Elementary (Harrison St.)	112	77	91	102	105	99
Lincoln-Douglas Elementary	96	107	96	87	88	104



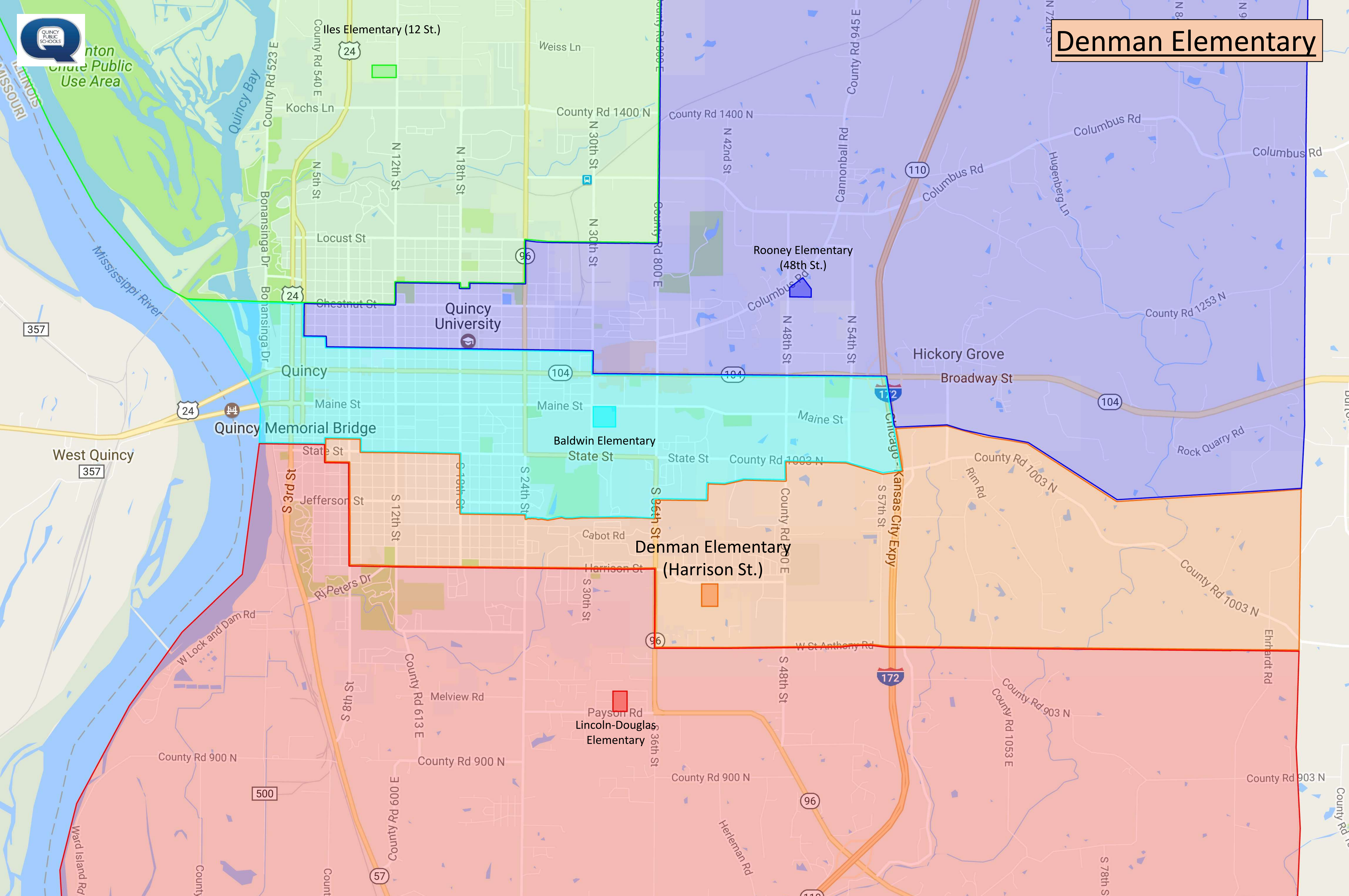








Denman Elementary





Lincoln-Douglas Elementary

